

# How to Read Piano Sheet Music: Notes on the Lines and between the Lines

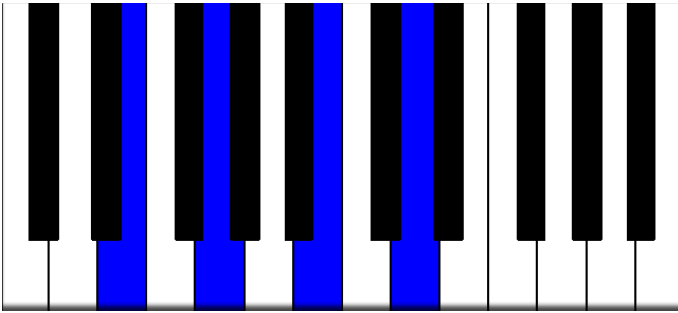
## Example 1: Treble Clef

Fmaj7 Em7

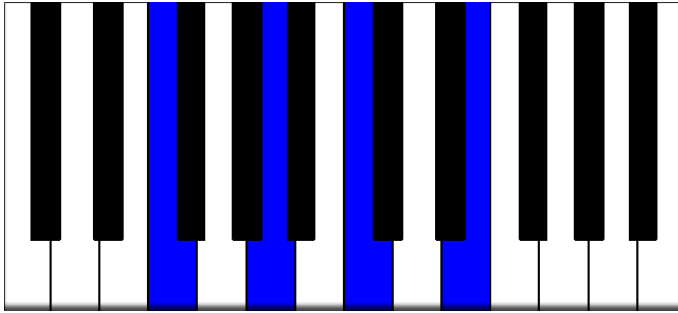
## Example 2: Bass Clef

Am7 G7 Am7 Bm7 $\flat$ 5

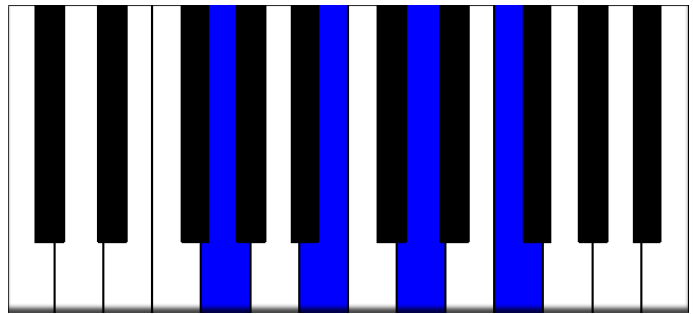
Notes for Improvisation



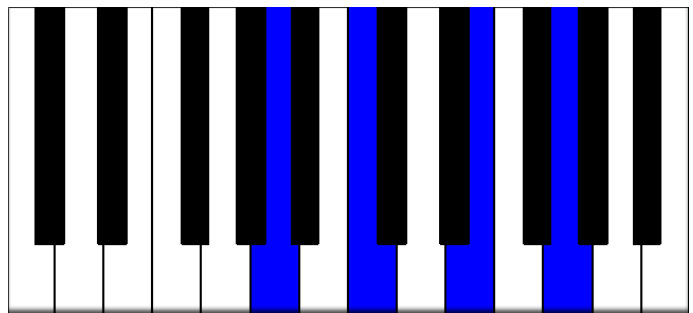
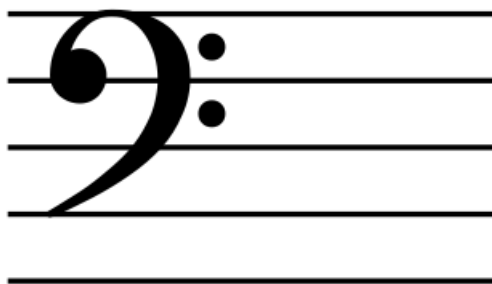
*Em7 E G B D (on the lines in treble clef, add F on top)*



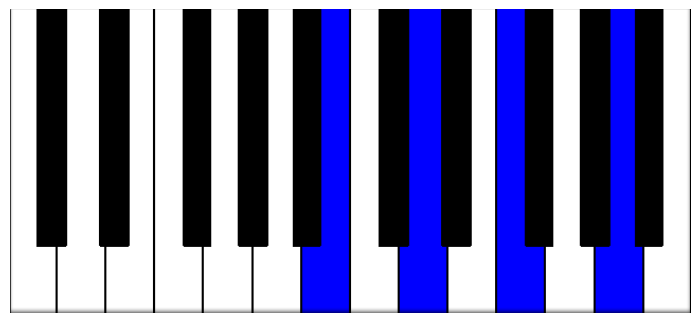
*Fmaj7 F A C E (between the lines in treble clef)*



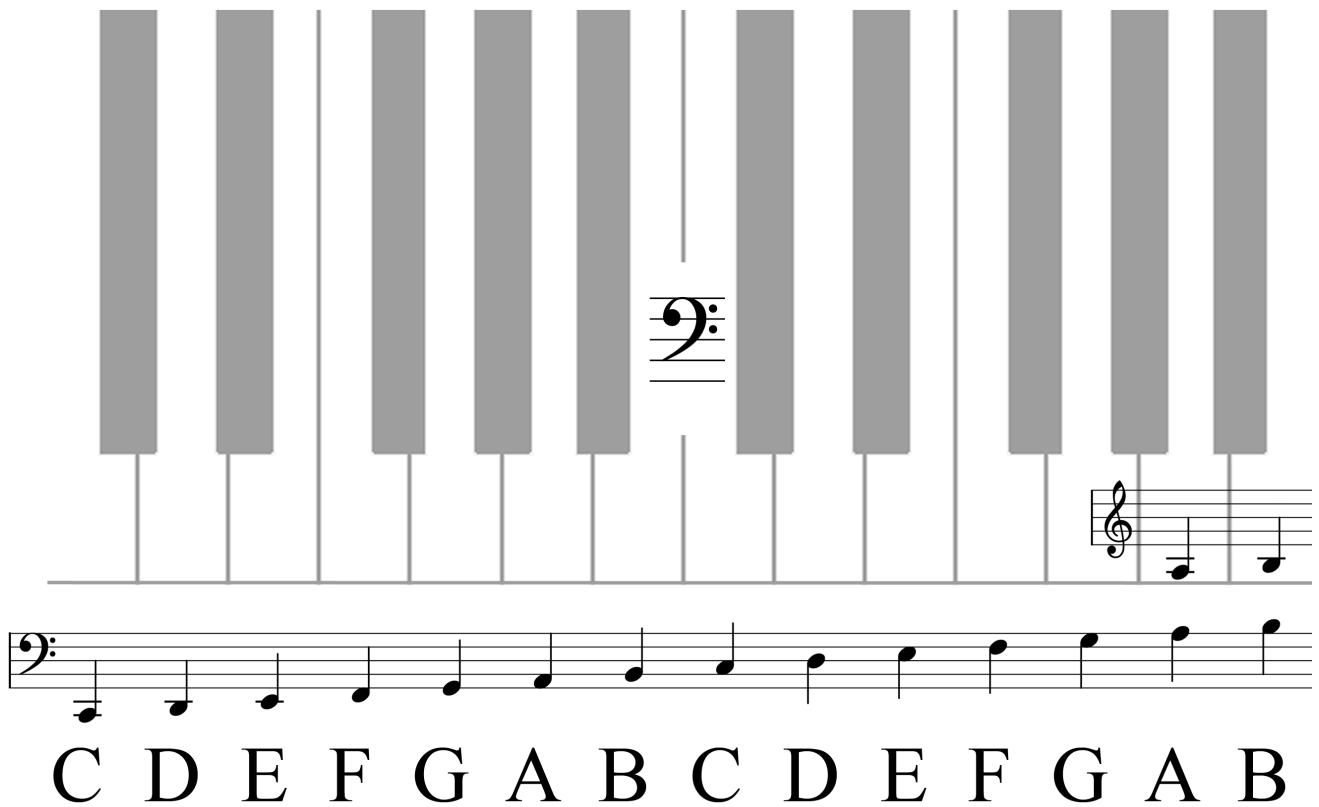
*G7 G B D F (on the lines in bass clef)*



*Am7 A C E G (between the lines in bass clef)*



*Bm7b5 B D F A (on the lines in bass clef)*



### Bass Clef

Notes on the lines from bottom to top:

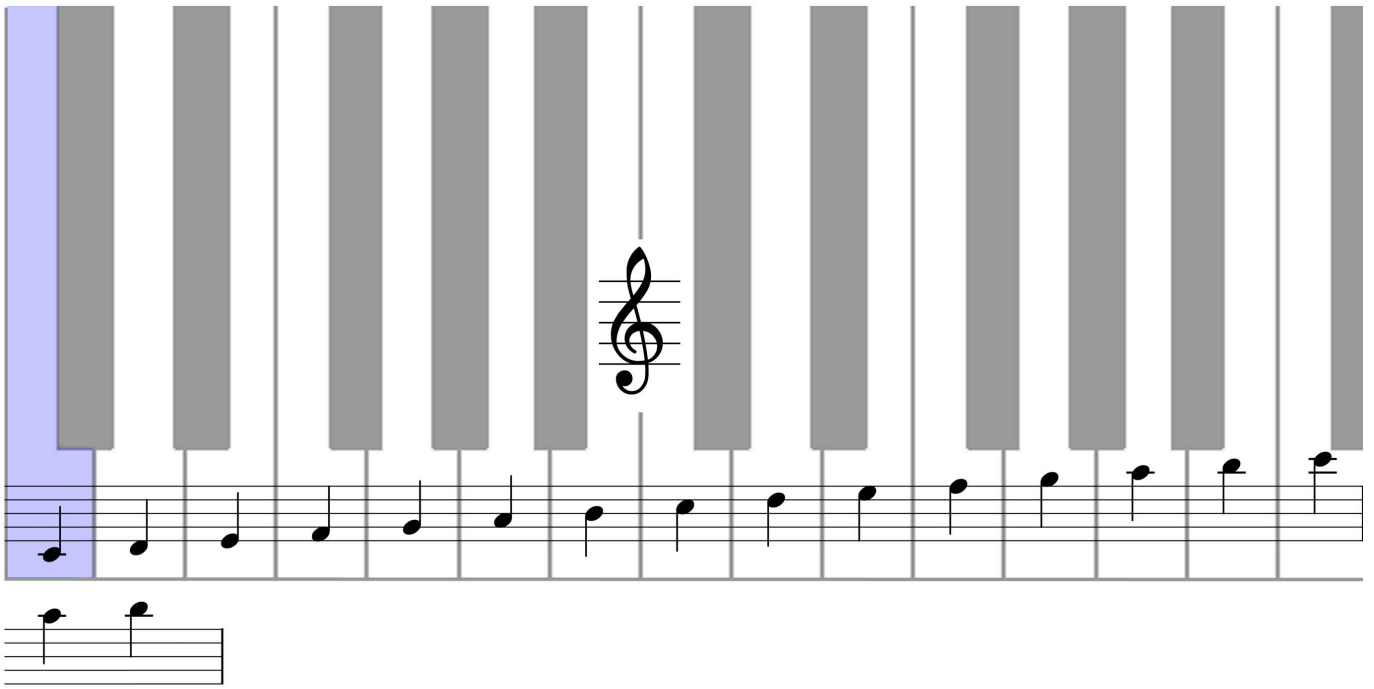
**G B D F A**

**Great Big Dogs Fight Animals**

Notes between the lines from bottom to top:

**A C E A**

**All Cows Eat Grass**



C D E F G A B C D E F G A B C

### Treble Clef

Notes on the lines from bottom to top:

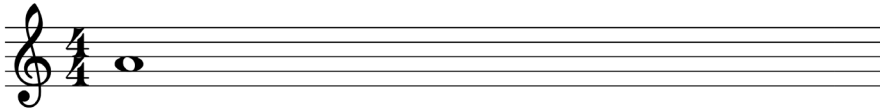
**E G B D F**

Every **G**ood **B**and **D**raws **F**ans

Notes between the lines from bottom to top:

**F A C E**

## Note lengths



**1 whole note**



**2 half notes**



**4 quarter notes**



**8 eighth notes**

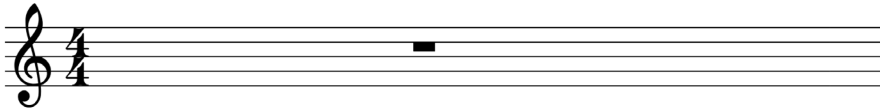


**16 sixteenth notes**



**12 triplet eighth notes**

## Rests



**whole rest**



**half rest**



**quarter rests**



**eighth rests**

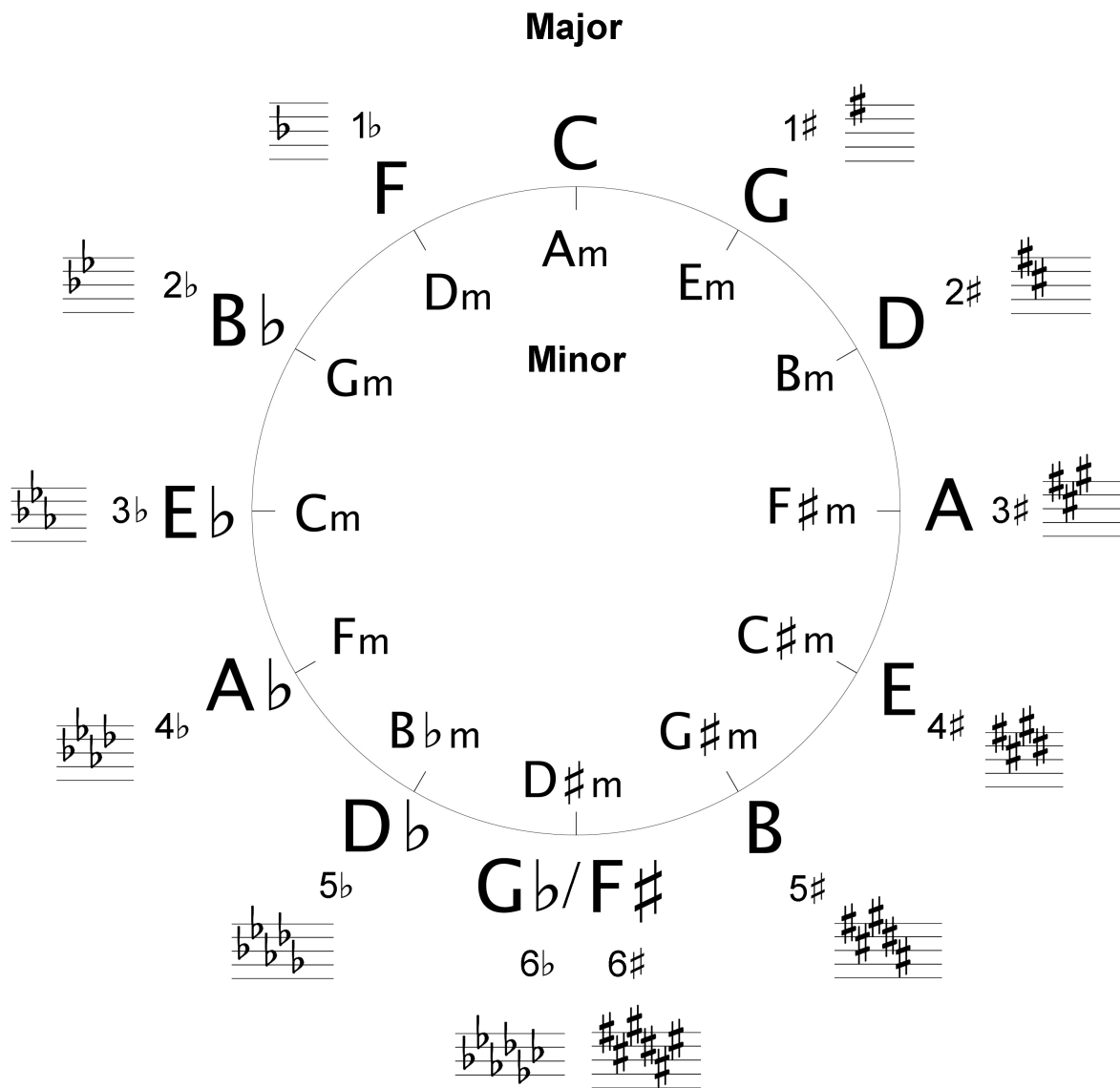


**sixteenth rests**



**rests in eighth triplets**

## The Circle of Fifths



Flats in order of appearance: B<sup>b</sup>, E<sup>b</sup>, A<sup>b</sup>, D<sup>b</sup>, G<sup>b</sup>, C<sup>b</sup>

Sharps in order of appearance: F<sup>#</sup>, C<sup>#</sup>, G<sup>#</sup>, D<sup>#</sup>, A<sup>#</sup>, E<sup>#</sup>